

User's Manual

For iVina 1200P Color Image Scanner



Doc. No.250-0227-E Rev. 1.0

iVina Inc.

Trademarks

All brands and product names in this manual are trademarks of their respective holders.

Copyright

All rights reserved. No part of this publication may be reproduced, transmitted, transcribed, stored in a retrieval system, or translated into any language or computer language, in any form or by any means, electronic, mechanical, magnetic, optical, chemical, manual, or otherwise, without the prior written permission of iVina Inc.

Material scanned by this product may be protected by governmental laws and other regulations, such as copyright laws, the customer is solely responsible for complying with all such laws and regulations.

Warranty

The information contained in this document is subject to change without notice.

iVina makes no warranty of any kind with regard to this material, including, but not limited to, the implied warranties of fitness for a particular purpose.

iVina shall not be liable for errors contained herein or for incidental or consequential damages in connection with the furnishing, performance, or use of this material.

FCC Radio Frequency Interference Statement

This equipment has been tested and found to comply with the limits for a class B digital device, pursuant to Part 15 of the FCC rules. These limits are designed to provide reasonable protection against harmful interference in a residential installation. This equipment generates, uses, and can radiate radio frequency energy and, if not installed and used in accordance with the instruction manual, may cause harmful interference to radio communication. However, there is no guarantee that interference will not occur in a particular installation. If this equipment does cause harmful interference to radio or television reception, which can be determined by turning the equipment off and on, the user is encouraged to try to correct the interference by one or more of the following measures:

- Reorient or relocate the receiving antenna.
- Increase the separation between the equipment and receiver.
- Connect the equipment into an outlet on a circuit different from that to which the receiver is connected.
- Consult the dealer or an experienced radio/TV technician for help.

FCC CAUTION: To assure continued compliance, (example - use only shield interface cables when connecting to computer or peripheral devices). Any changes or modifications not expressly approved by the manufacture of this device could void the user's authority to operate the equipment. This device complies with Part 15 of the FCC Rules. Operation is subject to the following two conditions: (1) This device may not cause harmful interference, and (2) this device must accept any interference received, including interference that may cause undesired operation.

Responsible Party:	iVina INC. 732 Sussex Place, Milpitas, CA 95035, USA
Telephone Number:	+1 (510) 368-8889

EC Declaration of Conformity

Manufacturer's Name: iVina Inc.

Manufacturer's Address: 732 Sussex Place, Milpitas, CA 95035, USA

declare that the product

Model Number : iVina 1200P

conforms to the following Product Specifications:

Emission: EN 50081-1 (1992)
EN 55022 (Class B) (1994) (Conducted/Radiated)
EN 61000-3-2 (Harmonics)(1996)
EN 61000-3-3(Flicker) (1995)

Immunity: EN50082-1 (1992)
IEC 1000-4-2 (ESD) (1995)
IEC 1000-4-3 (RS) (1995)
IEC 1000-4-4 (EFT/Burst) (1995)
IEC 1000-4-5 (SURGE) (1995)

Safety: Low Voltage Directive 73/23/EEC
Compliance: UL , C-UL , TUV/GS

TABLE OF CONTENTS

CHAPTER 1	INTRODUCTION	1-1
------------------	---------------------------	------------

CHAPTER 2	SCANNER INSTALLATION	2-1
	PRECAUTIONS.....	2-1
	UNLOCKING YOUR SCANNER	2-1
	CONNECTING THE CABLES.....	2-2
	PLACING YOUR ORIGINAL.....	2-2

CHAPTER 3	SOFTWARE INSTALLATION	3-1
	SYSTEM REQUIREMENT.....	3-1
	THE INSTALLATION PROCEDURES	3-1

CHAPTER 4	CUSTOMIZING YOUR BUTTON PREFERENCES	4-1
	A GLANCE OF THE BUTTONS	4-1
	BUTTON FUNCTION	4-1
	COPY BUTTON	4-1
	OCR BUTTON.....	4-1
	SCAN BUTTON.....	4-1
	EMAIL BUTTON.....	4-1
	CUSTOMIZING YOUR BUTTON PREFERENCES.....	4-2
	CUSTOMIZING YOUR COPY PREFERENCES	4-2
	CUSTOMIZING YOUR OCR PREFERENCES	4-3
	CUSTOMIZING YOUR SCAN PREFERENCES	4-5
	CUSTOMIZING YOUR EMAIL PREFERENCES	4-6

CHAPTER 5	WORKING WITH THE PUSH BUTTONS	5-1
	MAKING YOUR FIRST COPY	5-1
	SCANNING YOUR TEXT TO AN OCR APPLICATION.....	5-2
	SCANNING YOUR PHOTO TO PAPERPORT	5-2
	SENDING YOUR IMAGE TO AN EMAIL APPLICATION	5-3

CHAPTER 6	SCANNING FROM WITHIN A TWAIN COMPLIANT APPLICATIONS	6-1
	STARTING YOUR FIRST SCAN FROM WITHIN A TWAIN APPLICATION .	6-1
	USING IVINA TWAIN WINDOW	6-3
	IMAGE TYPE	6-3
	SCANNING PARAMETERS & IMAGE CONTROL.....	6-6
	SCANNING	6-12

CHAPTER 7	CARE AND MAINTENANCE	7-1
	CLEANING	7-1

CHAPTER 8	TROUBLESHOOTING	8-1
	FREQUENTLY ASKED QUESTIONS.....	8-1
	TECHNICAL SUPPORT	8-2

CHAPTER 9	SPECIFICATIONS	9-1
	MODEL: IVINA 1200P	9-1

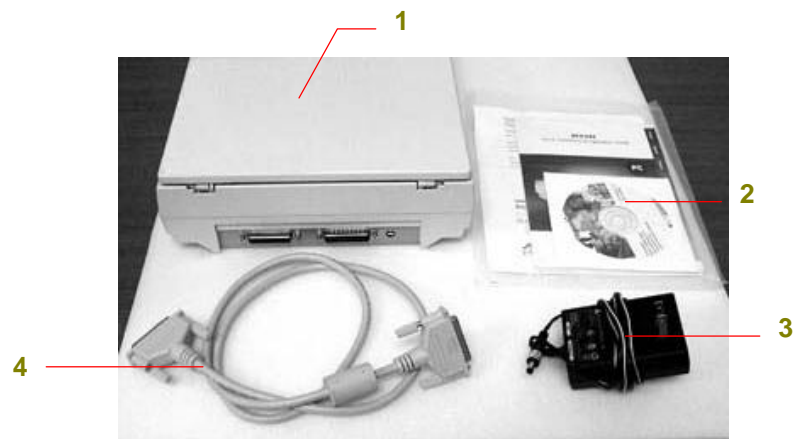
INDEX	A
--------------------	----------

Chapter 1 INTRODUCTION

Thank you for purchasing iVina 1200P color image scanner. iVina is one of the leading company in the world to deliver high quality image scanner.

iVina 1200P is a new flatbed scanner with evident push buttons at the front. These buttons feature one-step operation, which makes scanning intuitive, quick, and virtually user friendly.

To ensure the optimum performance of the scanner, please take a few minutes to read through this manual before you install and operate the scanner. The manual contains valuable information of how to unpack, install, operate, and maintain the scanner properly. Figure 1-1 below shows the package contents. Please check if all items are well received. If there is any item missing or damaged, please contact your nearest dealer immediately for replacement.



1. Scanner main unit
2. Bundled Software CD & Quick Guide
3. Power adaptor
4. Scanner Cable

Figure 1-1 Package Contents

Note: When unpacking the scanner, retain the packing material and shipping box in case you may transport the scanner in the future.

Chapter 2 SCANNER INSTALLATION

PRECAUTIONS

- ❖ Keep the scanner out of direct sunlight. Direct exposure to the sun or excessive heat may cause damage to the unit.
- ❖ Do not install the scanner in a humid or dusty place.
- ❖ Be sure to use the proper AC power source.
- ❖ Place the scanner securely on an even, flat surface. Tilted or uneven surfaces may cause mechanical problems.

UNLOCKING YOUR SCANNER

To protect the scanning unit from damage during transportation, a lock switch is designed at the back of the scanner to keep the scanning unit from moving. To unlock the scanner, move the lock switch up as shown in Fig. 2-1.

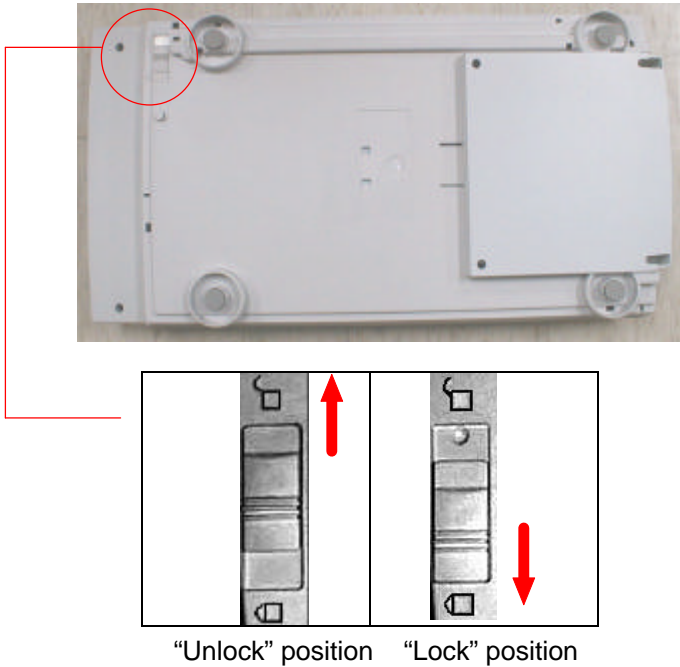


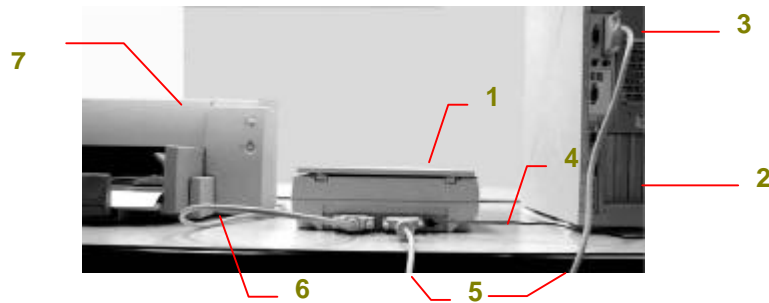
Figure 2-1 Unlocking the Scanner

Note: When you need to transport the scanner, be sure to move the lock switch to the "lock position"; otherwise, unexpected damage should cause the scanner malfunction and void the warranty.

CONNECTING THE CABLES

Connect iVina 1200P to your computer as shown in Figure 2-2.

1. Plug one end of the supplied scanner cable to the parallel port at the back of the scanner and the other end into your computer where the printer port cable was plugging.
2. Connect the small end of the power adapter into the power jack on the back of the scanner.
3. Plug the large end of the power adapter to the power outlet. Now, the scanner will be automatically powered on.

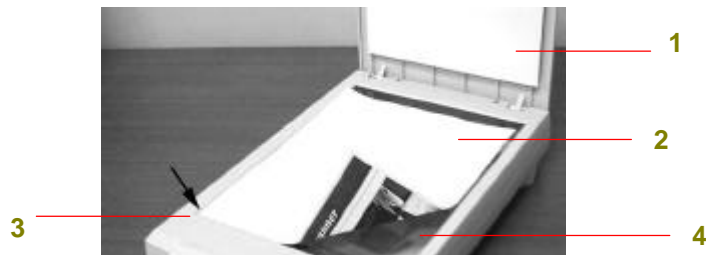


1. Scanner
2. Host computer
3. Parallel port
4. Power cable
5. Scanner cable(supplied)
6. Printer cable(not supplied)
7. Printer

Figure 2-2 Cable connection

PLACING YOUR ORIGINAL

Open the document cover and then place your original face down on the document glass as shown in Fig. 2-3. Make sure to align the upper right corner of your original to the alignment mark.



1. Document cover
2. Original document
3. Alignment mark
4. Document glass

Figure 2-3 Placing the original

Chapter 3 SOFTWARE INSTALLATION

SYSTEM REQUIREMENT

To run iVina 1200P at rated speed, the following minimum requirements are highly recommended:

- IBM compatible PC 486, Pentium or later
- Microsoft Windows 95, Windows 98, or Windows NT
- One printer port available (EPP/ECP/SPP)
- 100 Megabytes of available hard disk space for installation
- 16 Megabytes of RAM (32 Megabytes or higher recommended)
- A video graphics array (VGA) monitor
- A Microsoft Windows-compatible pointing device (e.g., mouse)
- A CD-ROM drive

THE INSTALLATION PROCEDURES

Before installation, please close all the applications including the anti-virus program running at your computer.

1. Insert the supplied CD into your CD-ROM. The Installation menu as shown in Figure 3-1 appears.

Note: If the Installation menu fails to appear, an alternative method is to click the Start button on the task bar, choose Run, and type "d:\cdsetup.exe" (D: your CD-ROM drive in use) and click O.K.

2. Click "Install Software". A second menu shown as Figure 3-2 appears. This menu lists various software contained in the CD including the scanner driver and the bundled software applications such as MGI PhotoSuite, Xerox TextBridge OCR, and Button Manager, and PaperPort.
3. Follow the on-screen instructions to install the scanner driver and all the applications individually.
4. Restart the computer after the above installation have been completed done.

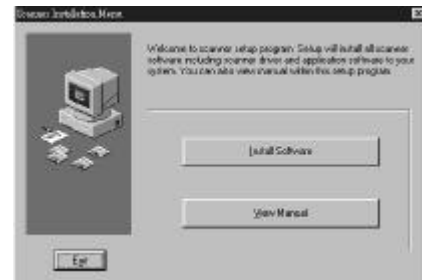


Figure 3-1



Figure 3-2

Chapter 4 CUSTOMIZING YOUR BUTTON PREFERENCES

A GLANCE OF THE BUTTONS



Figure 4-1 A glance of the buttons

BUTTON FUNCTION

COPY BUTTON

A press of the Copy button allows you to get an immediate copy for your scanned image directly from your printer.

OCR BUTTON

A press of the OCR button allows you to convert your original text into editable text with a word processor.

SCAN BUTTON

A press of the Scan button allows you to scan your photo and display the image on the desktop of PaperPort, the powerful document management application.



EMAIL BUTTON

A press of the Email button allows you to send your scanned image to your email application as an attached file.

CUSTOMIZNG YOUR BUTTON PREFERENCES

CUSTOMIZING YOUR COPY PREFERENCES

1. After installing the Button Manager software application and restarting your computer, the Preferences dialogs box will be automatically displayed as shown in Figure 4-1.

An alternative method to prompt the Preferences dialog box is to double-click the iVina Button Manager  9:04 AM icon at the right corner of your task bar and choose "Preferences" when a pop-up menu  appears.

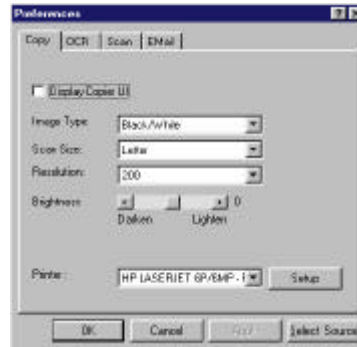



Figure 4-2

Note: If the iVina Button Manager icon at your task bar contains an exclamation mark like , this means you have not selected the right scanner. Please click the iVina Button Manager icon then choose "Select scanner" and select "iVina 1200P". Finally choose "connect scanner". Then, the exclamation mark will be disappeared.

2. To customize the Copy preferences, please refer to the following steps.

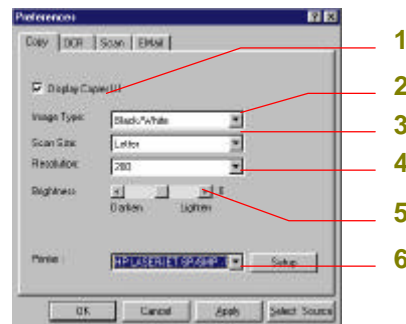


Figure 4-3 iVina Copier

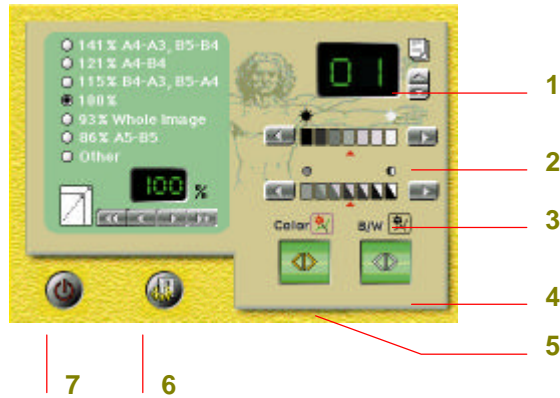
- 1). Check to display the iVina Copier as shown in Figure 4-3 which allows you to operate it as a normal copier.

To customize your iVina Copier preferences, please refer to next page.

- 2). Choose proper image type. (See Chapter 6 for more detail about the image type.)
- 3). Choose proper scan size from a list of Letter, A4, A5, 3"x5", Business Card, etc.
- 4). Choose proper resolution. (See Chapter 6 for more detail about the resolution.)
- 5). Adjust the degree of your brightness by moving the slider to the right or left.
- 6). Choose your printer.
- 7). Choose "OK" to save the above settings.

CUSTOMIZING YOUR IVINA COPIER PREFERENCES

1. If the item of “Display Copier UI” was previously selected in the Copy preferences dialog box, after pressing the Copy button, the iVina Copier window as shown below will be displayed.



1. Copy count
 2. Brightness
 3. Contrast
 4. Start Black & White copy
 5. Start Color copy
 6. Preferences
 7. Exit
- Figure 4-4 iVina Copier window

2. Press the Preferences button to display the iVina Copy preferences dialog box. The Preferences dialog box allows you to change the settings to produce the best copy result. Details in choosing the best setting for your particular original, please refer to Chapter 6.



Figure 4-5 Copier Preferences dialog box

- 1). **Resolution:** Select proper resolution. (Refer to Chapter 6.)
- 2). **Scan Size:** Select proper scan size including **Max., Letter, A4, B5, A5, and Auto Crop**. Among them, the auto crop is a convenient feature to automatically crop your scanned image to fit your existing paper even if your original is not aligned near the alignment mark. This is particularly useful if your printer comes with *fit to page* feature.
- 3). **Mode:** Select proper image mode including **Gray, LineArt, Halftone, Background Removal, Auto**. Among them, background removal can automatically remove the unwanted background color for your original to sharpen your text. The Auto is an optimized mode regardless of the contents of your original.

CUSTOMIZING YOUR OCR PREFERENCES

1. Repeat step 1 in the previous section Customizing your Copy preferences.
2. In the Preferences dialog shown as Figure 4-2, choose the “OCR” tab to display the OCR preferences dialog box as shown in Figure 4-6.
3. To customize your OCR preferences, please refer to the following steps.

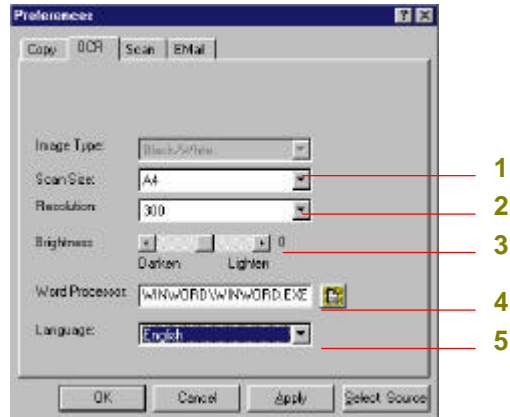


Figure 4-6 OCR Preferences dialog box

- 1). Choose proper scan size from a list of Letter, A4, A5, 5"x3", Business Card, etc.
- 2). Choose proper resolution (Recommend to choose 300 dpi). (See Chapter 6 for more detail about the resolution.)
- 3). Adjust the degree of your brightness by moving the slider to the right or left.
- 4). Choose the location of your word processor.
- 5). Choose your desired language for your original text.
- 6). Choose "OK" to save the above settings.

CUSTOMIZING YOUR SCAN PREFERENCES

1. Repeat step 1 in the previous section Customizing your Copy preferences.
2. In the Preferences dialog shown as Figure 4-2, choose “Scan” tab to display the Scan preferences dialog box as shown in Figure 4-7..
3. To customize the Scan preferences, please refer to the following steps.

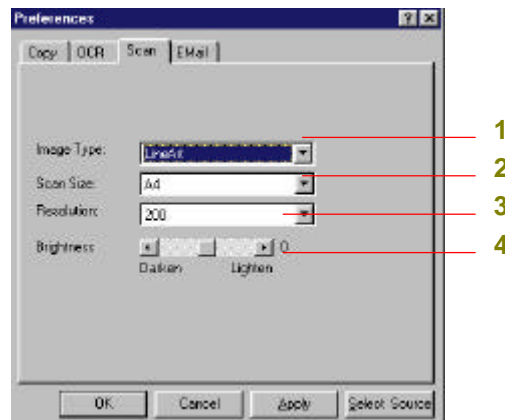


Figure 4-7 The Scan Preferences dialog

- 1). Choose proper image type. (See Chapter 6 for more detail about the image type.)
- 2). Choose proper scan size from a list of Letter, A4, Business Card, etc.
- 3). Choose proper resolution. (See Chapter 6 for more detail about the resolution.)
- 4). Adjust the degree of your brightness by moving the slider to the right or left.
- 5). Choose "OK" to save the above settings.

CUSTOMIZING YOUR EMAIL PREFERENCES

1. Repeat step 1 in the previous section Customizing your Copy preferences.
2. In the Preferences dialog shown as Figure 4-2, choose “Email” tab to display the Email preferences dialog box as shown in Figure 4-8.
3. To customize the Email preferences, please refer to the following steps.

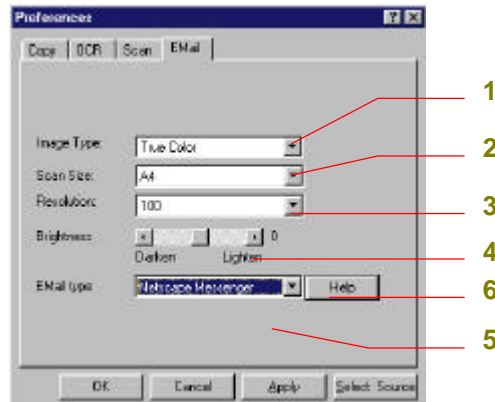


Figure 4-8 the Email Preferences dialog

- 1). Choose proper image type. (See Chapter 6 for more detail about the image type.)
- 2). Choose proper scan size from a list of Letter, A4, Business Card, etc.
- 3). Choose proper resolution. (See Chapter 6 for more detail about the resolution.)
- 4). Adjust the degree of your brightness by moving the slider to the right or left.
- 5). Choose proper Email software application.
- 6). Click the Help button to follow the procedure to set up proper email software as your default email software application. Otherwise, the email button can not function properly.
- 7). Choose "OK" to save the above settings.

Note #1: Followings are the respective procedures to set up the default e-mail software application for several popular e-mail software applications such as Outlook Express, Netscape Messenger, or Eudora:

Outlook Express

- 1). Select Options from the Tools menu in Outlook Express.*
- 2). In the Options dialog box, click the General tab.*
- 3). Select the "Make Outlook Express my default e-mail program" option.*
- 4). Select the "Make Outlook Express my simple MAPI client" sub option.*
- 5). Choose "Apply" and close Outlook Express.*

Netscape Messenger

- 1). Select Preferences from the Edit menu in Netscape.*
- 2). From the category list, select Mail Server from the Mail & Groups item.*
- 3). Click the More Option button.*
- 4). From the More Mail Server preferences dialog box, select Use Netscape Messenger from MAPI-based applications.*
- 5). Close Netscape Messenger.*

Eudora

- 1). Select Options from the Tools menu in Eudora.*
- 2). From the category list, select MAPI.*
- 3). Select "Always from the USE QUALCOMM Eudora MAPI server" option.*
- 4). Choose "Apply" and close Eudora.*

Note #2: The following table lists the major default settings for the linked applications:

<i>Setting</i>	<i>Copy</i>	<i>OCR</i>	<i>Scan</i>	<i>Email</i>
<i>Image Type</i>	<i>Black & white</i>	<i>Black & white</i>	<i>True color</i>	<i>True color</i>
<i>Scan Size</i>	<i>Letter</i>	<i>Letter</i>	<i>Letter</i>	<i>6"x4"</i>
<i>Resolution</i>	<i>100 dpi</i>	<i>300 dpi</i>	<i>100 dpi</i>	<i>100 dpi</i>

Chapter 5 WORKING WITH THE PUSH BUTTONS

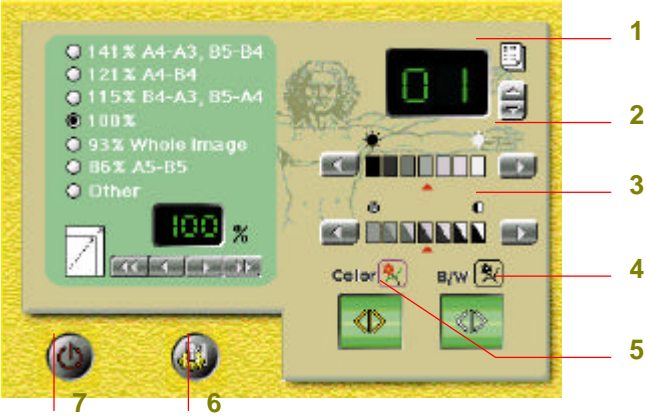
This section provides the simple operation steps with illustrations to make the best of the button scanner.

MAKING YOUR FIRST COPY

- 1. Place your original face down on the document glass.
- 2. Press the Copy button. The scanning message is first displayed, and then in a second the copying is done through a designated printer.

Or

- 2. If the item of "Display Copier UI" was previously selected in the Copy preferences dialog box, after pressing the Copy button, the iVina Copier window as shown below will be displayed to allow you to access a variety of copy features and operate it just like a normal copier.



- 1. Copy count
- 2. Brightness
- 3. Contrast
- 4. Start Black & White copy
- 5. Start Color copy
- 6. Preferences
- 7. Exit

Figure 5-1 iVina Copier window

SCANNING YOUR TEXT TO AN OCR APPLICATION

1. Place your original face down on the document glass.
2. Press the OCR button. Your original text will be automatically converted into editable text in a word processor.

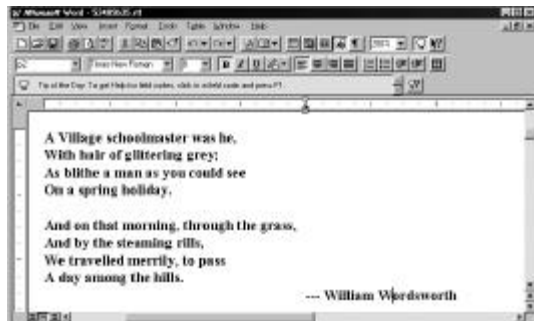


Figure 5-2 A word processor window

SCANNING YOUR PHOTO TO PAPERPORT

1. Place your original face down on the document glass.
2. Press the Scan button. Your scanned image will be displayed in the desktop of PaperPort.

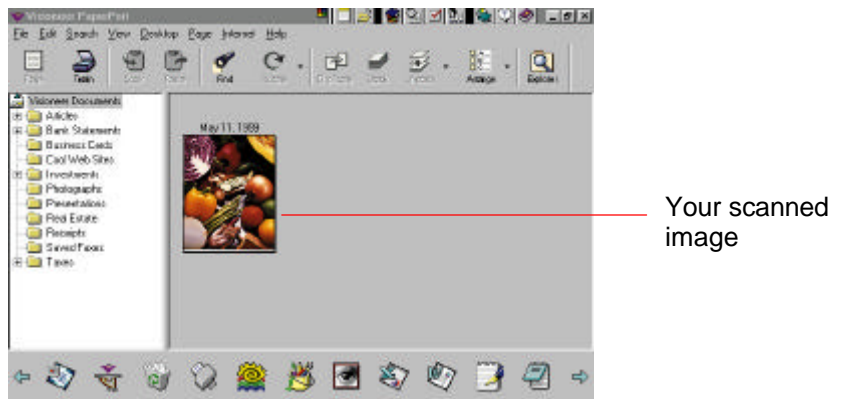


Figure 5-3 PaperPort desktop

Note:

See detailed *PaperPort user's manual* to learn to know the powerful document management tool.

SENDING YOUR IMAGE TO AN EMAIL APPLICATION

1. Place your original on the document glass.
2. Press the Email button. The scanning message is displayed and within a few seconds, your original image is scanned and sent to the designated email application as an attached file shown below (See the following illustration.)

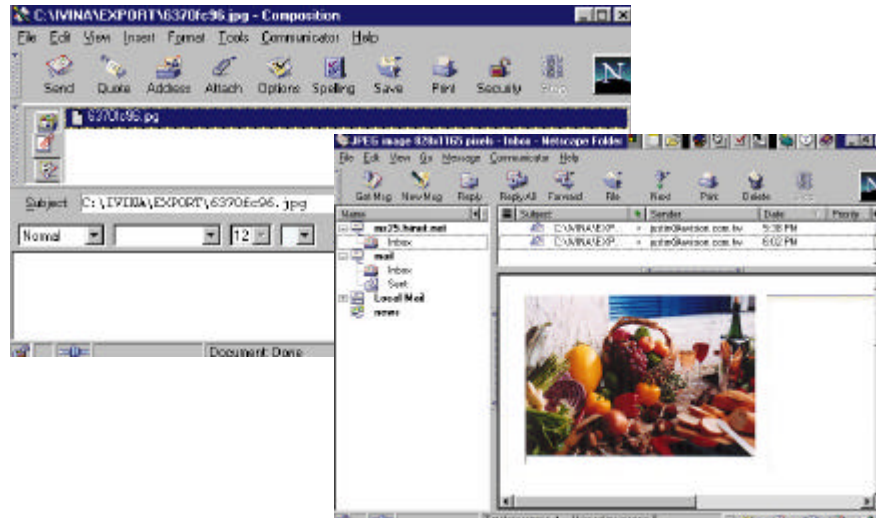
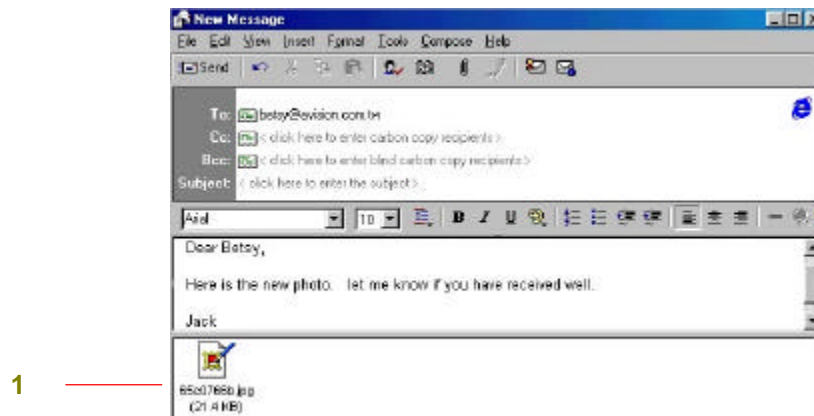


Figure 5-4 Netscape Messenger window



1. Your scanned image

Figure 5-5 Outlook Express window

Chapter 6 SCANNING FROM WITHIN A TWAIN COMPLIANT APPLICATIONS

The iVina 1200P provides an alternative method to scan your image without pressing the push buttons. You can start iVina TWAIN window from within a TWAIN compliant application to proceed your scanning task. The command to start the iVina TWAIN window may vary due to different software applications. To check the correct command, please refer to the user manual of the relevant software application.

STARTING YOUR FIRST SCAN FROM WITHIN A TWAIN APPLICATION

1. Start your TWAIN compliant application such as PaperPort (which is bundled in the CD), or Adobe PhotoShop after placing the document upside down on the document glass.
2. From the File menu, choose Select Source to select *iVina 1200P* your Twain source.

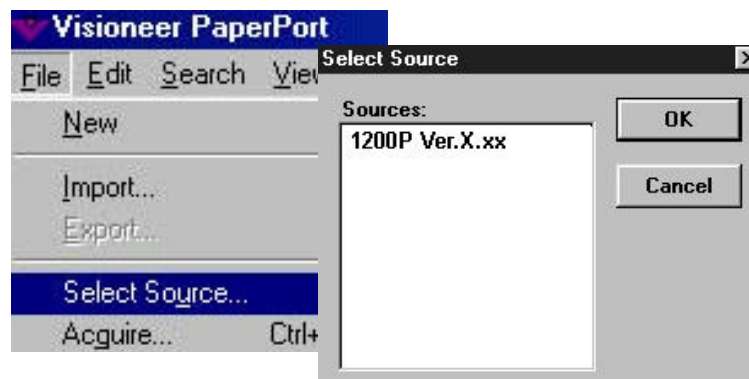


Figure 6-1 Select Source dialog box

3. Choose *Acquire* to prompt the iVina TWAIN window as shown in Figure 6-2.
4. Click the Preview or Scan button to preview or scan your *document* or *image*.

**TWAIN: Stands for Technology Without An Interesting Name, an industry-standard protocol which exchanges information between the application and image acquisition device such as scanner*

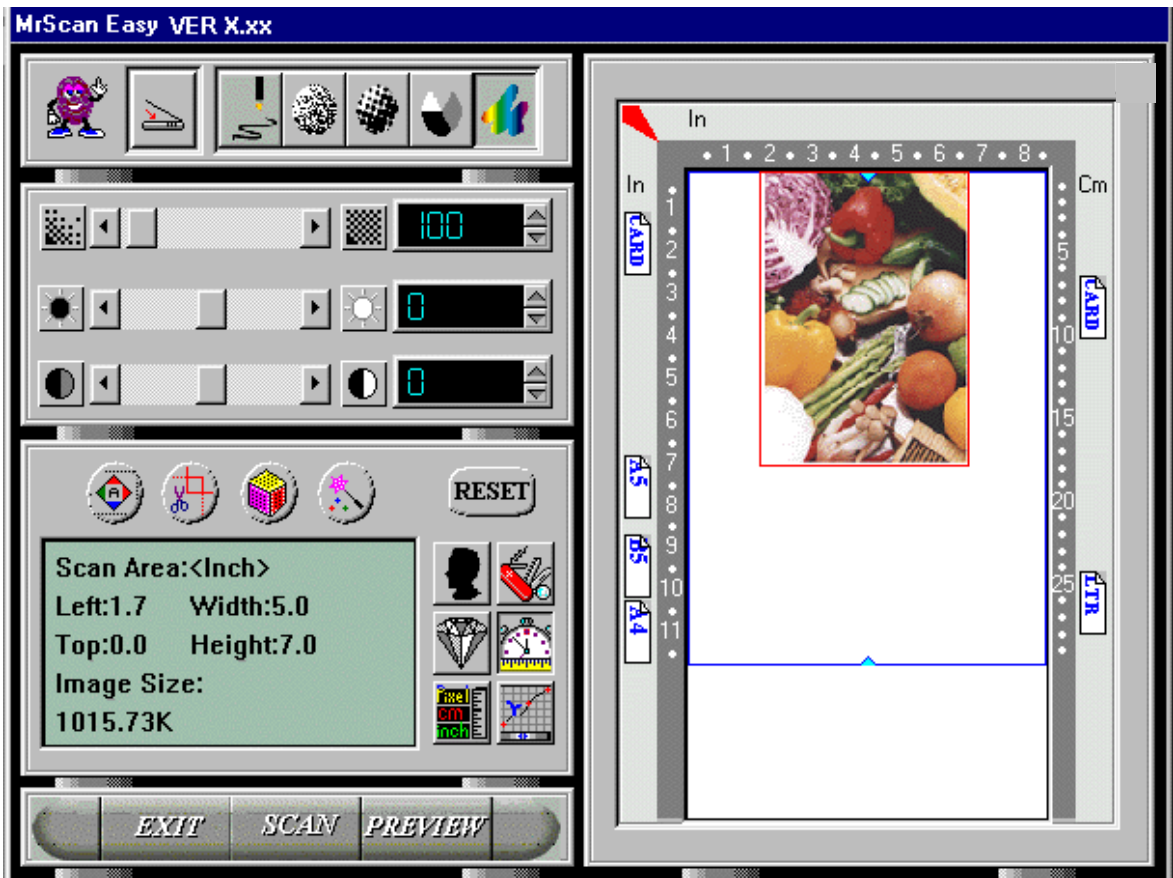
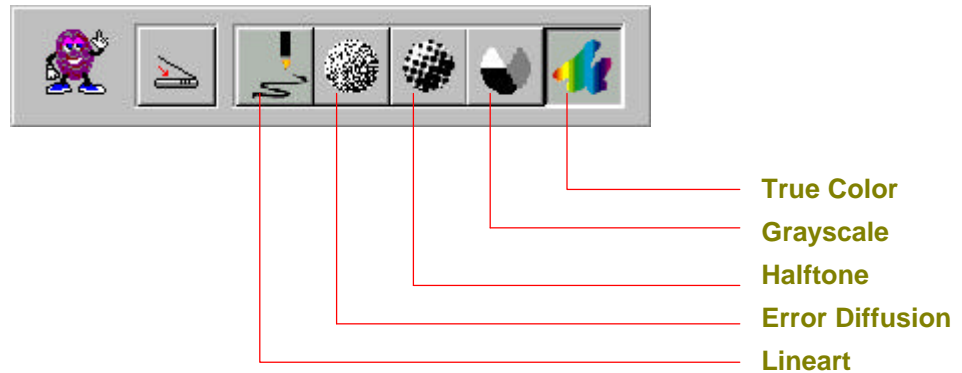


Figure 6-2 iVina TWAIN window

USING IVINA TWAIN WINDOW

IMAGE TYPE

The scanner provides several image types as explained in below:



Line art

Lineart presents the image in black and white only and there are no intermediate shades of gray in between. That means each pixel of the image is 100% black or 100% white. Lineart is the best choice of image type if you want to scan text, pen or ink drawing. Since only 1-bit of black or white information is required for each **pixel***, the disk space required for saving lineart image is only about 1/24 of that required to save 24-bit true color images.



Figure 6-3 Lineart Image

*Pixel: A combination of two words: picture and element, a pixel is a single dot on a computer display or in a digital image.

Halftone

In addition to the black and white display, Halftone simulates gray scale by using different size of dots. Particularly when you view the image at a certain distance, it looks very closely like a gray image yet it consumes the least disk space. Halftone is the picture that we usually see in newspapers or magazines. Since Halftone is one type of black and white image, the disk space required to save a halftone image is 1/24 of that required to save a 24-bit true color image.



Figure 6-4 A halftone image

Grayscale (4096 levels gray scale/Internally)

Usually, a single-channel image consists of at least 8-bit or 256 levels of shades of gray in an image. However, the scanner with 12 bits produces a Gray image with 4096 shades of gray between pure black and pure white. Gray is the best choice of image if you wish to scan a black and white photograph. With 12 bits of color information per pixel, the disk space required to save a gray image is eight times more than lineArt and 1/3 of that required to save a 24-bit true color image.



Figure 6-5 A grayscale image

Error Diffusion

While presenting black & white image and taking up but a minimum storage space(1/24 of that of a 24-bit true color image), error diffusion gives good image texture and excellent image details. Diffusion also minimizes the interference patterns that can occur after scanning halftone images, such as those found in magazines, books, and newspapers.



Figure 6-6 An error diffusion image

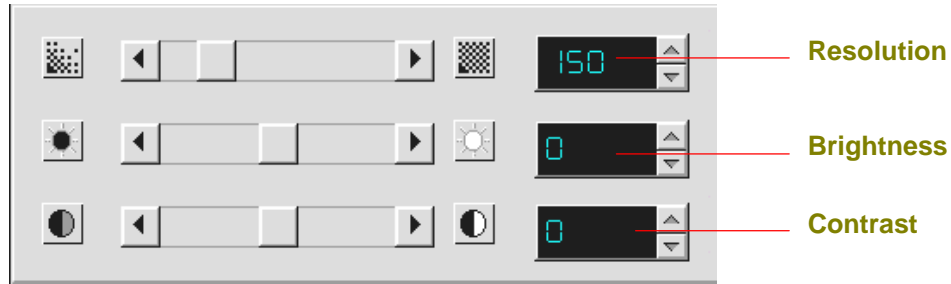
True Color

A 36-bit Color image consists of three 12-bit color channels. The red, green, and blue channels are mixed together to create a combination of one billion(2^{36}) colors which give a more true-to-life quality to the image. True Color is the best choice if you want to scan a color photo.



Figure 6-7 A true color image

SCANNING PARAMETERS & IMAGE CONTROL



Resolution :

The number of dpi (dots per inch) that the scanner uses for a scan. Usually the greater the number, the higher the resolution. Yet up to a certain level, the resolution will not be visually increased but the disk space will be increased. A higher resolution (over 600 dpi) will only be recommended when you need to scan a small area under True Color mode.



Resolution: 50 dpi



Resolution: 150 dpi

Tips:

1. For your information, an A4 size color image scanned at 300 dpi at True Color mode consumes approximately 25 MB of disk space. A higher resolution (usually means over 600 dpi) is recommended only when you need to scan a small area at True Color mode.
2. You can also refer to the following table to choose a proper resolution while applying your image to other application.

Scanner Settings Application	Image Type	Resolution (dpi)
File, Fax, E-mail Your Document	LineArt	200
View, Copy, Edit Your Color Picture	True Color	100
OCR* Your Document	LineArt	300

***OCR**: Stands for Optical Character Recognition, the process to convert an image to a text format.

Brightness:

Adjusts the lightness or darkness of an image. The higher the value, the brighter the image.

Decrease your Brightness



Normal



Increase your Brightness



Contrast:

Adjusts the range between the darkest and the lightest shades in the image. The higher the contrast, the bigger the difference of the gray level.

Decrease your Contrast

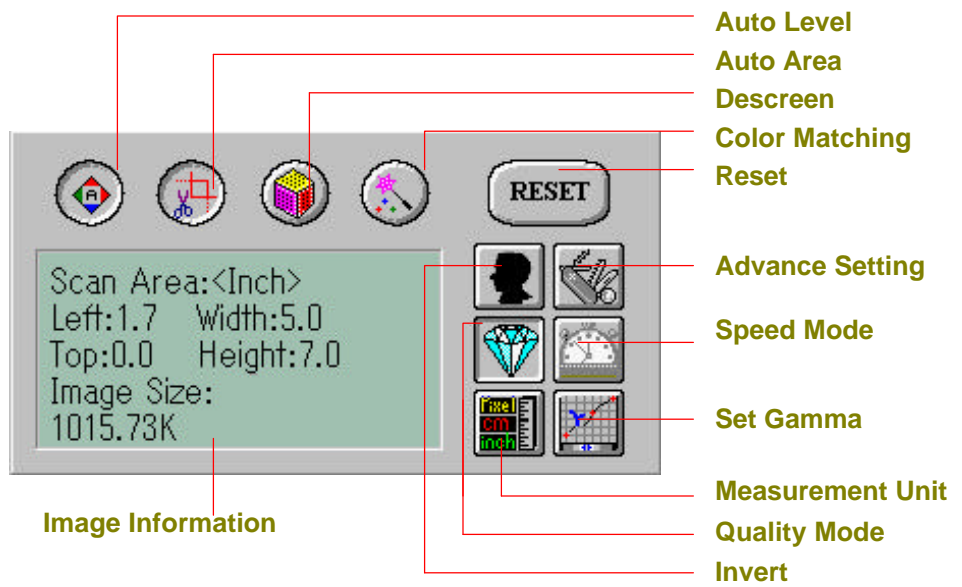


Normal



Increase your Contrast





Auto Level:

Optimizes the scanned image.

Before Auto Level



After Auto Level



Auto Area:

Automatically sets the whole document as the scan area, no matter what its size.

Before Auto Area



After Auto Area



Descreen:

Eliminates the Moire patterns commonly found in printed matter.

Before descreen



After descreen



Color Matching:

Adjusts the color quality of the image to make it close to the original. This function uses default parameters to adjust the image.

Before Color Matching



After Color Matching



Reset:

Resets the scanning parameters you set.

Invert:

The invert command reverses the brightness and the color in the image. For color images, each pixel will be changed into its complementary color at the command of *Invert*.

Original



After Invert

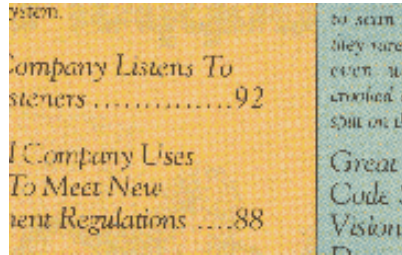


Advance Settings:

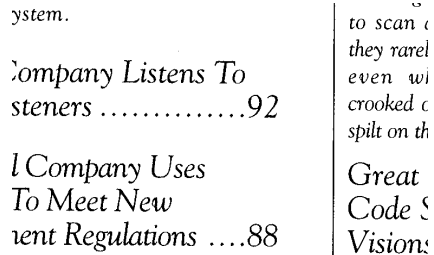
The Advance Settings provides several functions such as Dynamic Background Removal, Color Drop-out and SRGB. These functions are briefly explained as below:

1). DBR(Dynamic Background Removal) - Apply exclusively when you need to scan as an Lineart image . The DBR function incorporates a few enhanced options to allow you to remove background color to sharpen your text or drawing.

Original(Color picture)



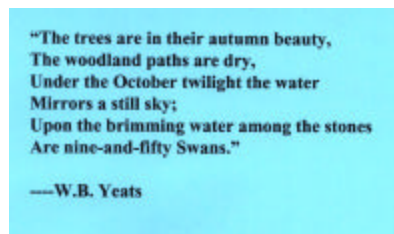
After applying DBR option



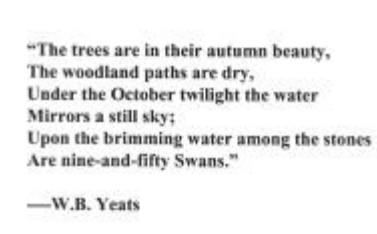
2). Color drop-out - Apply exclusively when you need to scan as a black and white image

The Color drop-out function allows you to remove one of the R(Red), G(Green), or B(Bue) color or to convert all the color data into Neutral Gray. For example, if you want to remove the text or background in blue color, simply check the Blue Channel then the text or background in blue color will be removed. On the other hand, if your original contains various color data, then check the Neutral Gray to retain all the color data in gray since removing either one of the red, green, or blue color will inadvertently affect the rest color data as every color contains different elements of each of the red, green, and blue channel. See the result below:

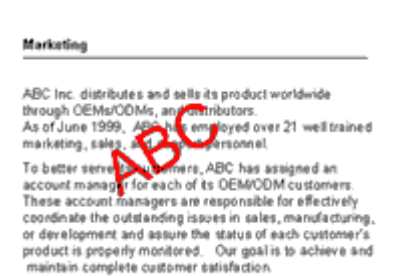
Your original with blue color background



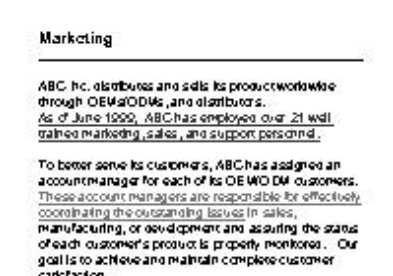
After click the B(Blue) channel



Your original with red watermark



After click the R(Red) channel



3). SRGB(Standard Red, Green, and Blue) - Apply exclusively when you need to scan a color image

The SRGB function allows your scanned image to retain the same image quality among your scanning software, computer monitor, and printing output if both your computer monitor and printer support SRGB. However, the gamma adjustment will be disabled while applying this item since it has been optimized.

Note: The factory default setting is SRGB enabled.

Quality/Speed Mode:

Users can select the mode to perform scanning according to their own need. Select quality mode scanning if your emphasis is on the quality of the scanned image. Or you can select speed mode scanning if you want to speed up the scanning process.

Measurement Unit:

Represents the different measuring systems to be used in each scan.

Pixel

```
Scan Area:<Pixel>
Left:0    Width:850
Top:0    Height:1012
Image Size:
2.46M
```

Inch

```
Scan Area:<Inch>
Left:0.0  Width:8.5
Top:0.0  Height:10.1
Image Size:
2.46M
```

Cm

```
Scan Area:<Cm>
Left:0.0  Width:13.0
Top:0.0  Height:9.3
Image Size:
1.29M
```

Image Information:

Gives related information of the scanned image.

Set Gamma:

Adjusts the midtone of the image yet without losing details of the lightest and the darkest areas at the same time.

Gamma Value: 1.0



Gamma Value: 1.4



Gamma Value: 2.0



SCANNING



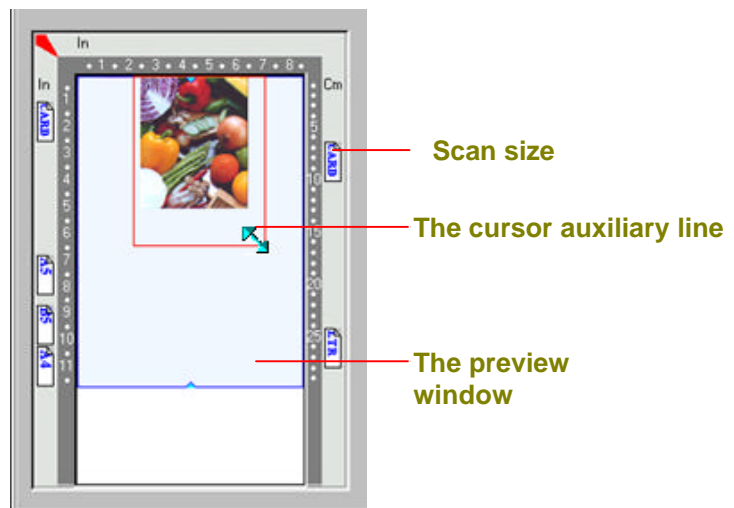
Preview: Previews your image roughly and allocates the area to be scanned.

Scan: Execute the Scans action.

Exit: Cancels the current job.

Document Size: To designate the size of your document, just click on its icon on the margin of the preview window.

As shown in the figure below, in the Preview window, you can define the area to be scanned by dragging the four cursor auxiliary lines.



Chapter 7 CARE AND MAINTENANCE

CLEANING

There are times the document glass is contaminated with dust or toner particles. To ensure quality scanning result, please wipe the document glass occasionally.

To clean the document glass,

1. Open the document cover as shown in Figure 7-1.
2. Dip a soft clean cloth with isopropyl alcohol(95%). And gently wipe the document glass until the dusty particles are thoroughly removed.



**The document
glass**

Figure 7-1 Cleaning the document glass

Chapter 8 TROUBLESHOOTING

FREQUENTLY ASKED QUESTIONS

Question: When the scanner is powered on, it makes noises and won't stand ready.

Answer: There are two possibilities:

- 1) You might fail to push the scanner shipping lock to its "use" position. If this is the case, pull the scanner status switch to its "use" position first.
- 2) The scanner is not placed on an even, flat desktop surface. This may cause the scanner to malfunction.

Question: The scanner is powered on, but the lamp does not light up.

Answer: The lamp is probably out of order. Contact your local dealer or distributor to replace the lamp. For your information, the average life time of the lamp is about 15,000 hours and the operating temperature for the scanner is between 10°C(50°F) and 40°C(104°F).

Question: While scanning, the scanner often makes noises, or it scans back and forth.

Answer: Usually this means the memory of your computer is not enough or the speed of your CPU too slow. Please try to increase your memory to at least 32M.

Question: Why is it that the scanned image always comes out to be too dark?

Answer: 1) Modify the Gamma setting to 1.8~2.2 for your monitor and, when printing, set the Gamma setting to 2.2 for your printer.
2) Adjust the Brightness setting from the user interface to get a brighter image.

Question: The scanner works well except for the line art image. The lines in the image seem to be much thicker than the original one.

Answer: Increase the Brightness or adjust the Threshold setting to improve line art image.

TECHNICAL SUPPORT

iVina provides technical support for 1200P at iVina Technical Assistance Center. Before contact with us, please prepare the following information.

- ❖ Scanner serial & revision number (located on the bottom of the scanner)
- ❖ Hardware configuration (e.g., your host type, RAM size, free disk space, etc.)
- ❖ The name and version of your software application
- ❖ The version of your scanner driver.

Please contact us at:

iVina Inc.

Address:	6815 Mowry Ave. Newark CA 94560, USA
Telephone number:	+1 (510) 739-2369
Fax number:	+1 (510) 739-6060

Chapter 9 SPECIFICATIONS

All specifications are subject to change without notice.

MODEL: iVina 1200P

Scanner Type:	Flatbed Scanner with Push Buttons
Optical Resolution:	600 dpi * 1200 dpi (H*V)
Maximum Resolution:	19200 dpi
Scanning Modes:	Black & White mode Halftone mode Error diffusion Grayscale(12 bits scanning/8 bits output) Color(36 bits scanning/24 bits output)
Document Size:	8.5" x 11.7"(WxH)
Interface:	Parallel Port(EPP/ECP/SPP)
Power Source:	100Vac~240Vac, 50~60Hz, external
Power Consumption:	12 watts(12Vdc, 1A)
Dimensions: (WxDxH):	470x260x100(mm)
Weight:	2.9kg(6.3lbs)

INDEX

A

Advance Settings · 6-10
alignment mark · 2-2
Auto · 5-2
Auto Area · 6-8
Auto Crop · 5-2
Auto Level · 6-8

B

Brightness · 6-7
button function
 Copy, OCR, Scan, Email · 4-1

C

Color Matching · 6-9
Contrast · 6-7
Copy button · 4-1
Copy preferences dialog · 5-1, 5-2
customizing your copy preferences · 4-2
customizing your email preferences · 4-5
Customizing your OCR preferences · 4-3
Customizing your Scan Preferences · 4-4

D

Descreen · 6-9
Display Copier UI · 5-1

E

Email button · 4-1

G

Gamma · 6-11
Gray · 6-4

H

Halftone · 6-4

I

Image Type · 6-6

LineArt, Halftone, Error Diffusion, Gray, True Color · 6-3

Invert · 6-9

L

LineArt · 6-3
lock switch · 2-1

M

Making your First Copy · 5-1

O

OCR · 6-6
OCR button · 4-1

P

Preview · 6-12

Q

Quality/Speed Mode · 6-11

R

Reset · 6-9
Resolution · 6-6

S

Scan · 6-12
Scan button · 4-1
Scan Size
 Max., Letter, A4, B5, A5, Auto Crop · 5-2
Scanning your photo to paperport · 5-3
Scanning your Text · 5-2
sending your image to an email application · 5-4

T

True Color · 6-5
TWAIN · 6-1